



Versatile Lessons for Versatile Classrooms™

Welcome to CAST 2023!

Attend our workshops, engage in our sponsored STAT Chats, and visit our booth to learn more about the RPA TREKs curriculum. Enter our raffle for a chance to win prizes!

Booth 214

Thursday, November 9, 11 a.m. – 5 p.m.
Friday, November 10, 9 a.m. – 5 p.m.
Saturday, November 11, 8 a.m. – 12 p.m.

Workshops

The Multilingual Scientist: Nurturing Inquiry and Language Development With ELPS in Diverse Classrooms

Thursday, 11/9 | 11:30 am - 12:30 pm | Room 332CF

Angie Maxey | Unlock the potential of emergent bilingual students as multilingual scientists through immersive strategies aligned with ELPS that promote inquiry-based learning and language growth.

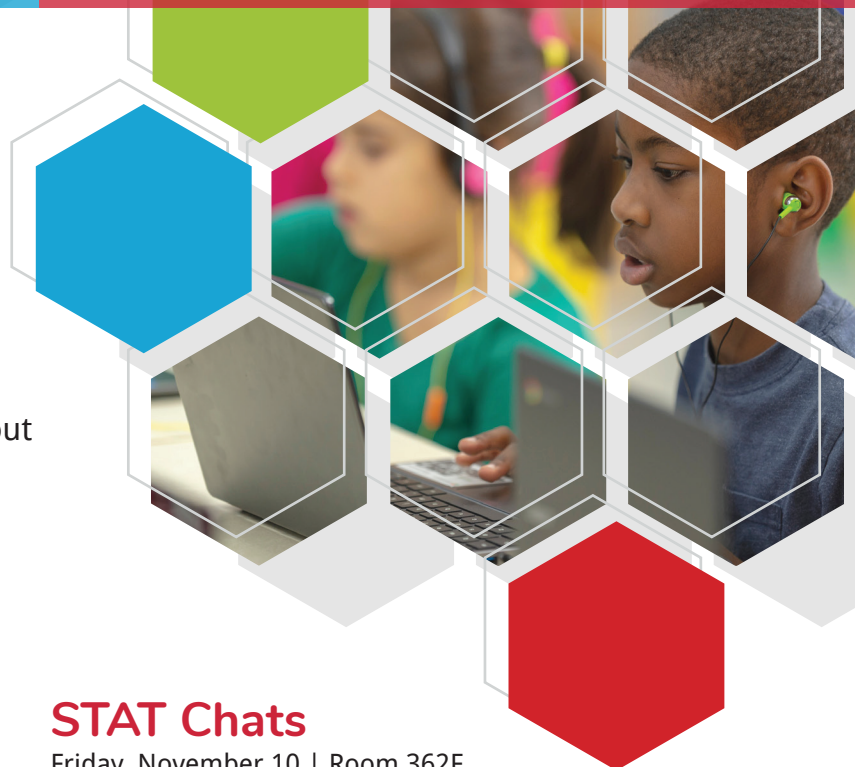
Bridging Skills and Content: Connect the Practices and Recurring Themes and Concepts With Discourse

Friday, 11/10 | 2:00 pm - 3:00 pm | Room 372BE

Elizabeth "Liz" McMillan | Explore how to guide students through active connections of science concepts with Scientific and Engineering Practices and Recurring Themes & Concepts. Join us for a research-based, collaborative workshop to authentically proceed through a 3D lesson, complete with active learning and teacher actions for enhanced classroom discussions.



STAT Chat Sponsor



STAT Chats

Friday, November 10 | Room 362F

Unleashing the Curiosity of Scientific Thinkers Through Three-Dimensional (3D) Instruction

Dr. Alicia Conerly | 8:20 am - 8:40 am

This chat explores the impact of three-dimensional learning as Science classrooms shift to the new TEKS standards. Learn how investigational and inquiry-based instruction will align core content, scientific and engineering practices and recurring themes and concepts. The result is more exploration and less explanation. Get equipped to unleash students' curiosity through observation, wonder, explanation, modeling, investigation, argumentation and evaluation.

Power Up Phenomena-Driven Inquiry and Discovery

Lisa "Kersch" Kersch | 11:40 am - 12:00 pm

In this fun and fast-paced interactive chat, participants will explore key qualities of phenomena to generate student inquiry and discovery. We'll exhibit how these observable events serve as anchors to storylines that power up authentic student questioning throughout investigations to uncover what and why they are learning. Bring a device to collaborate as we practice and learn from each other.

From Inspiration to Transformation: Fostering Science Initiatives That Represent a Diversity of Communities

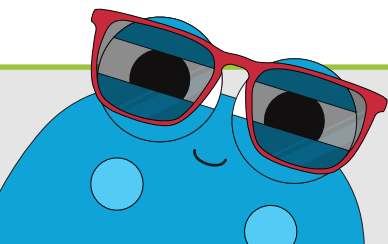
Dr. Alicia Conerly | 12:20 pm - 12:40 pm

Intentional investment in classroom, school and district initiatives that involve a diversity of communities is the catalyst to innovative outcomes in scientific fields. This chat highlights strategies to bridge gaps in education, resources and opportunities, especially for underrepresented populations, in order to create the means for science to advance - and everyone to triumph.

Exploring Inquiry and Inclusion: Unlocking the Potential of EBs in the Science Classroom

Angie Maxey | 1:00 pm - 1:20 pm

Prepare to dive into the transformative power of inclusive practices and inquiry-based learning for your Emergent Bilingual learners (EBs). This chat will showcase strategies, and tools needed to support academic growth and foster a sense of belonging for EBs in the science classroom. Whether you're a seasoned educator or new to teaching, you will find actionable takeaways for implementing structured academic talk and creating a collaborative learning environment with your EB learners.



Our low-prep Recall-Practice-Apply (RPA) TREKs supplemental curriculum model streamlines practice, intervention and STAAR® preparation. It is designed by teachers for versatile delivery for any classroom setting and all learners' needs. [Learn more and sample at rpatreks.com](https://rpatreks.com).